

Thurrock Infrastructure Delivery Plan

Page 1

Anna Richards and Jordan Green
ARUP

Agenda Item 5

Thurrock Infrastructure Delivery Plan

Member's Briefing

Page 2

Infrastructure Delivery Plan

Member's Briefing

- Introduction
 - Role of the IDP
 - Programme
 - Consultation
- Overview of infrastructure constraints/issues
- Feedback
- Next steps

Member's Briefing – Local Plan and IDP

Introduction to the IDP

What is the IDP?

The purpose of the Infrastructure Delivery Plan

The purpose of the IDP is to set out the social and physical infrastructure that will be required to deliver the planned level of housing and employment growth over the plan period.

This will form part of the evidence base for the Local Plan.

In 2019 Arup produced an Infrastructure Baseline Assessment, to understand existing provision and any existing capacity issues. The IBA covered:

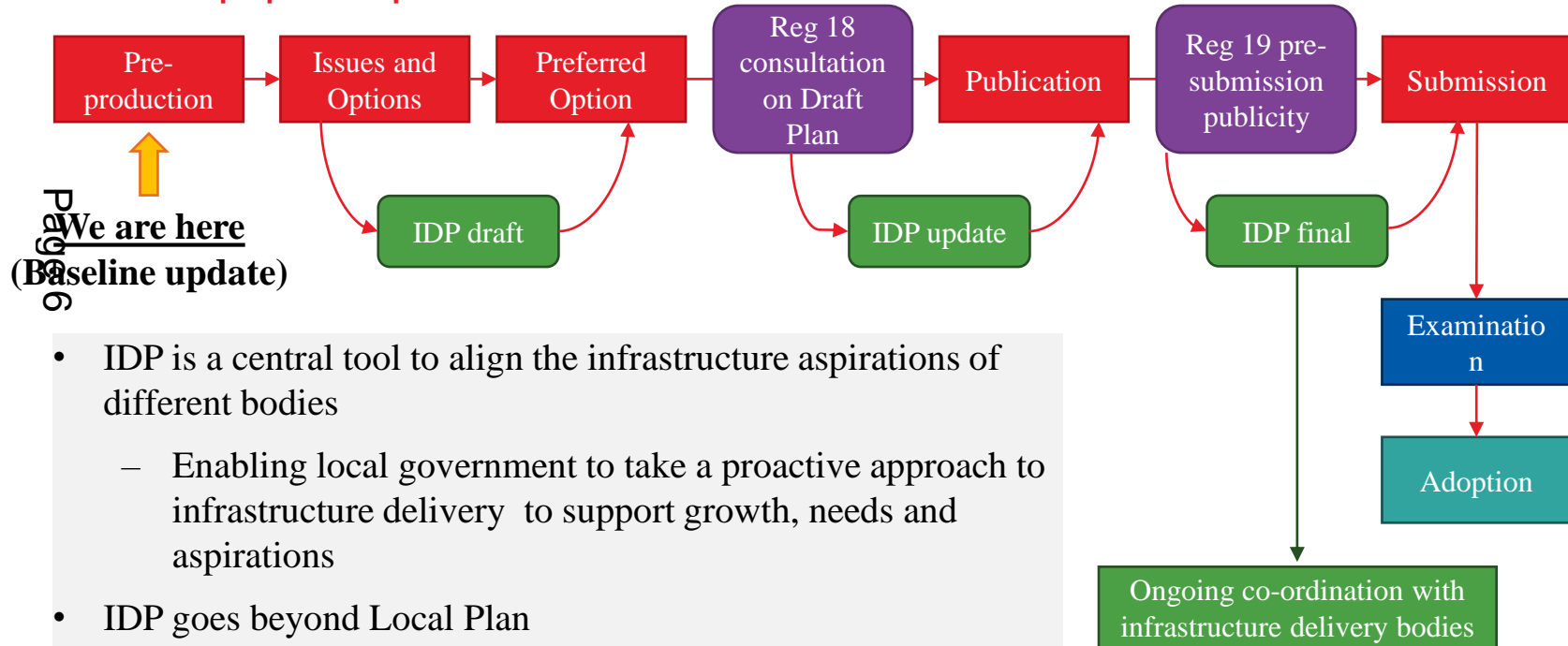
- Strategic issues in relation to the planning and delivery of infrastructure;
- Key areas of shortfalls in provision (or, vice versa, areas with capacity); and
- Planned projects to meet future demand.

Arup is now in the process of updating the IBA.



Relationship of the IDP to Local Plan

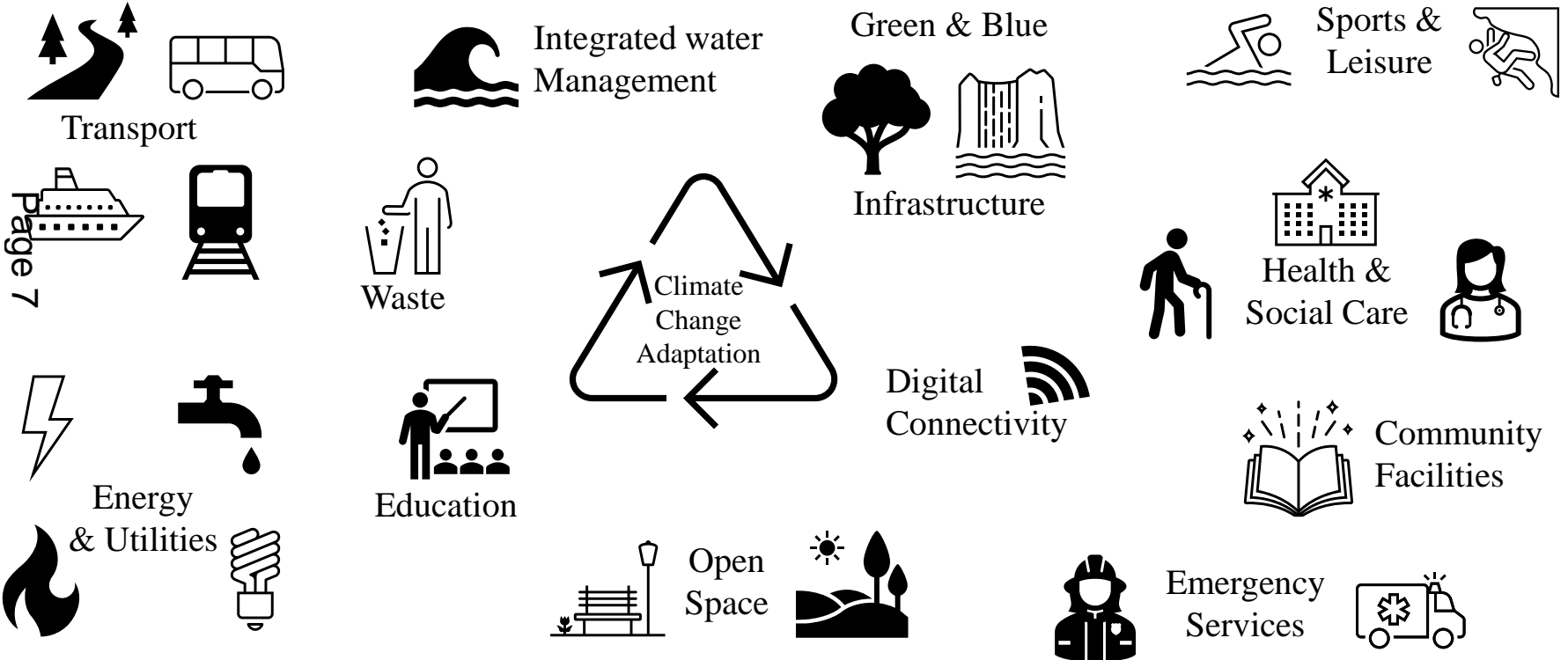
Local Plan preparation process



- IDP is a central tool to align the infrastructure aspirations of different bodies
 - Enabling local government to take a proactive approach to infrastructure delivery to support growth, needs and aspirations
- IDP goes beyond Local Plan

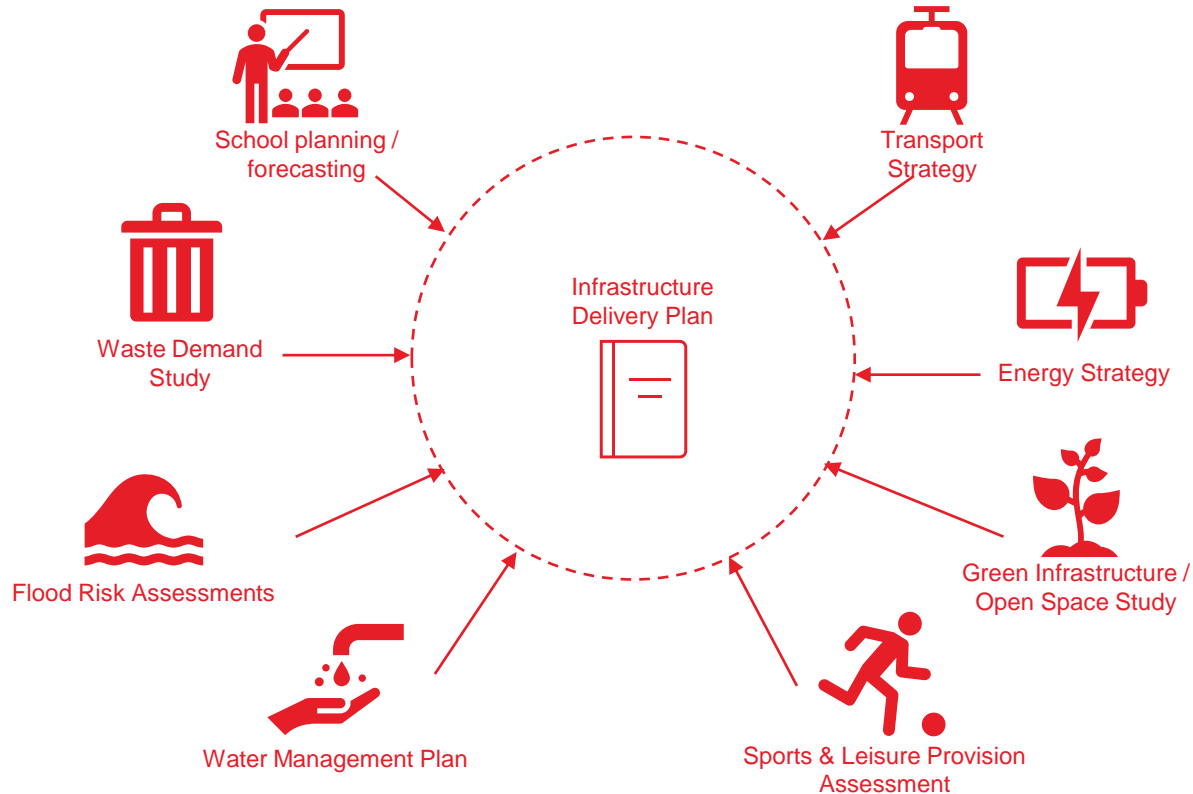
Types of infrastructure

What constitutes infrastructure?



Infrastructure planning

Interaction with other evidence and infrastructure provider plans



Consultation to date

In support of IBA update

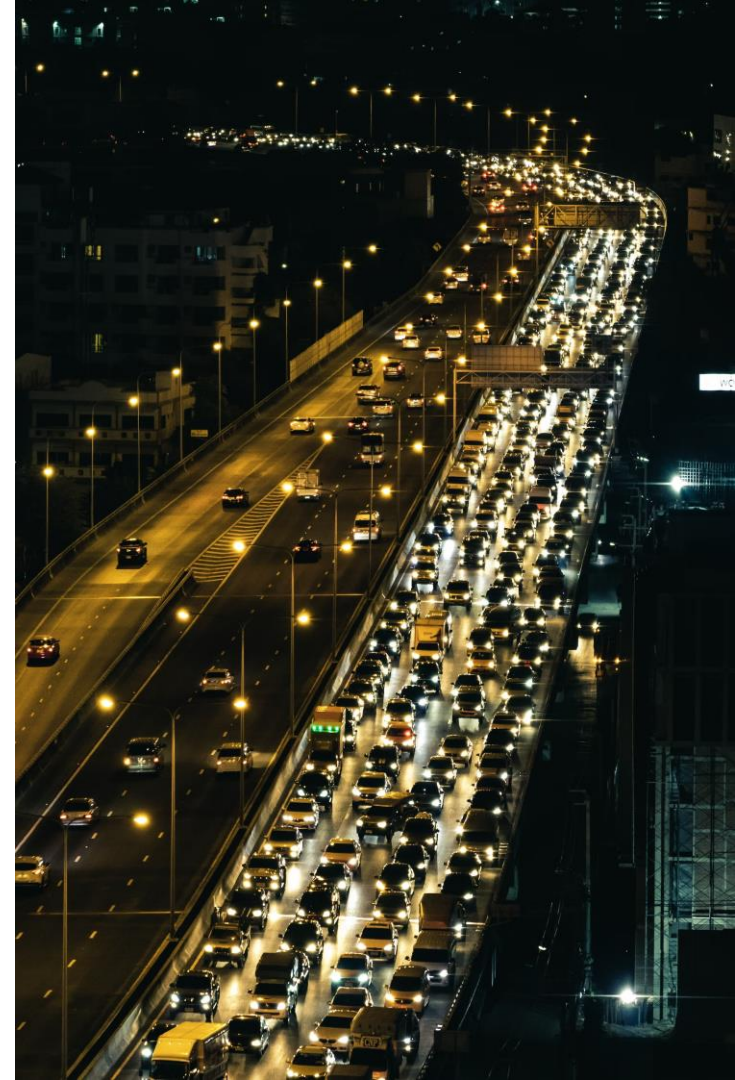
Infrastructure area	Consultation to date	Further consultation required
Transport	Workshops with Thurrock transport officers	Need further meeting on LTC
Integrated Water Management (including Flood Defences)	Workshop with potable and waste water providers (Northumberland and Anglian) and AECOM (preparing Strategic Flood Risk Assessment)	Further engagement with AECOM once SFRA has been prepared
Utilities (electricity and gas)	Email consultation	Follow up email consultation
Education	Preliminary meeting with Thurrock secondary heads association (but not primary schools)	Need further discussions with Thurrock education officers and further email consultation with Thurrock secondary and primary heads associations
Health and Social Care	Workshop with Thurrock health officers and NHS PCN and MSE Health and Care partners representatives	Need follow up discussions with MSE Health and Care Partnership
Green and Blue Infrastructure	Workshop with Thurrock officers	Follow up email consultation
Community	Workshop with Thurrock officers	Follow up email consultation
Sports and Recreation	Workshop with Thurrock officers	Follow up email consultation
Waste	Email consultation with Thurrock officers	Follow up meeting consultation
Emergency Services	Email consultation with Essex Fire and Rescue and Essex Police	No further consultation planned at this stage
Digital	Awaiting email consultation with Thurrock officers (TBC)	Follow up meeting consultation

Member's Briefing – Local Plan and IDP

Thurrock infrastructure constraints
(summary of baseline infrastructure issues
by infrastructure area)

Transport – Highways and LTC

- Highway network has significant capacity issues and has little resilience – impacts on the M25 and A13 can affect whole Thurrock road network
- Lower Thames Crossing
 - Council view that Lower Thames Crossing will make capacity issues worse and sever communities
 - Additional capacity delivered through recent schemes (such as A13 widening) will be taken up by predicted LTC movements
- Freeports and associated development also anticipated to put additional pressure on network
- In some areas, existing capacity constraints are preventing growth from occurring
 - For example, development being proposed off small lanes which would require significant upgrades to accommodate increased traffic



Transport – Public transport and active travel

Bus

- Council undertaking a review of its supported bus service provision
- Commercial bus operations are considered good – generally focused on existing urban areas, poor connections from rural communities
- Bus Service Improvement Plan

Page 12 Rail

- Underutilised network within the borough
- Conflict between demand for more freight rail movements vs ensuring sufficient number of passenger spaces
- Access to stations by public transport

Walking and Cycling

- Safe routes to school
- Local Cycle and Walking Infrastructure Plan (LCWIP)
- Active Travel Fund Schemes



Integrated Water Management

Supply

- Forecast deficit of water supply in Essex Water Resource Zone, due to:
 - CPO 18 climate change projections equating to a loss of 10 megalitres a day
 - Change in the level of drought resilience needed, from a one in 200 years event, to one in 500 years
 - New non-household demand causing a reduction in deployable output.
- Need to explore opportunities to bring down per capita consumption

Wastewater

- Need for further investment in drainage capacity within Tilbury catchment to accommodate growth – solutions include both Sustainable Urban Drainage Systems (SUDS) and the upsizing of existing sewers

Flooding

- The south of the borough is susceptible to groundwater flooding
- Few areas identified as Flood Zone 3B (functional floodplain) around the River Mardyke (around Purfleet and Chafford Hundred)



Electricity and Gas + Digital

Electricity

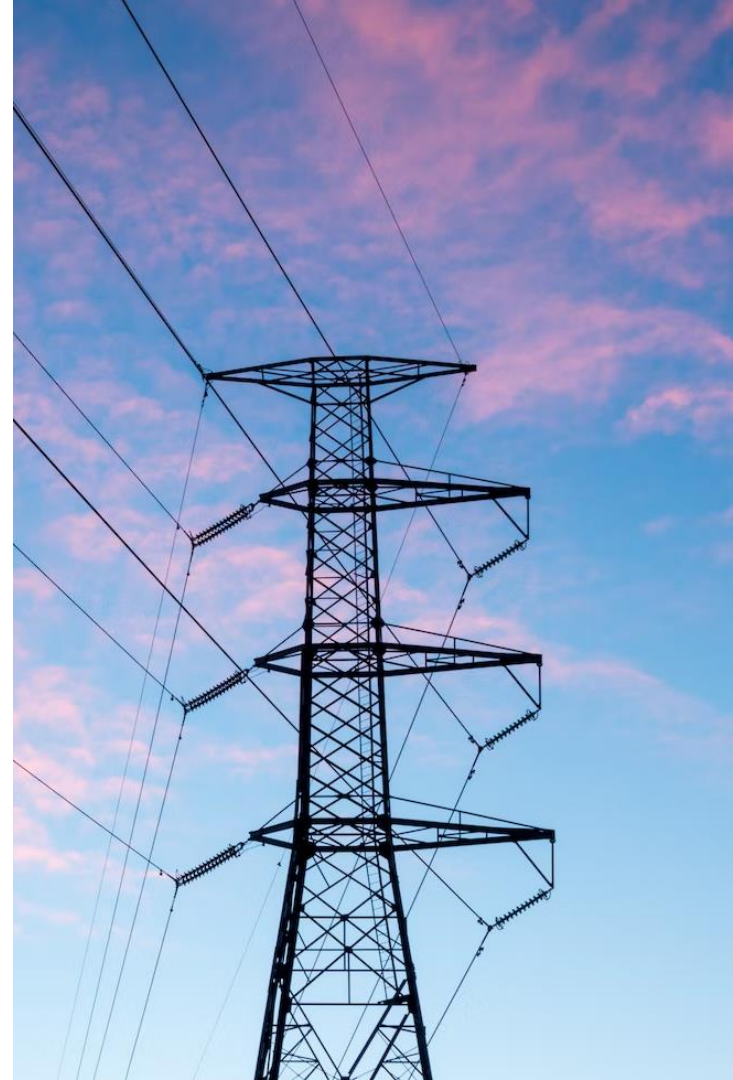
- There are some capacity issues across the whole network which will impact on broad growth locations across Thurrock
- Rainbow Lane Primary 11kV and West Horndon Primary 11kV run at full or nearly full capacity at present or will do in the near future

Page 14
Gas

- Based on past capacities and demands, it is not anticipated that there will be a shortage in the existing gas network – especially considering the move towards renewable sources

Digital

- Significant progress made via the Superfast Essex programme – Thurrock is also set to benefit from ultrafast fibre broadband to many businesses and homes by March 2023



Education – Early Years

Pupil Place Plan (PPP) for 2023 to 2028 is currently being updated. Further work will be required to factor in Local Plan growth into pupil forecasts, to understand where additional places may be required to accommodate growth

Early years

- Take up of Government funded early education for 2 year olds is line with national average, some parts of the borough lack provision
- No reported feedback that parents cannot gain a place for Government funded entitlement or 3-4 year olds
- Data suggests that there is a need to increase childcare outside the funded entitlements, also need for more SEND places and atypical hours places
- There has been an increase in schools offering before and after school provision and in the number of schools offering nursery provision
- A number of private/voluntary providers have closed and the Council is working with potential new providers to increase places
- Recruitment and retention of staff is a key constraint
- It is likely that further provision will be required to meet growth in all areas where additional homes are planned. Any new primary school development should provide early years facilities



Education – Primary

Primary

- Primary School vacancy data shows that there are very few vacancies for Years 1 and 2 across Thurrock, with localised areas of particular concern for Years 3 to 6 including Tilbury.
- Overall, there has been a reduction in birth rates leading to a reduction in demand for primary school places. Some schools have reduced the Pupil Admission Numbers.
However, while there is capacity in some schools, it does not align with demand. Localised areas of demand has led to introduction/planned introduction of bulge classes in some schools
- Popular schools oversubscribed, notably Arthur Buglar, Graham James, Deneholm, Harris Primary Academies Chafford Hundred and Mayflower, Quarry Hill, Warren, West Thurrock Academy, St Mary’s Catholic and Woodside primary schools



Education – Secondary & SEND

Secondary

- Similar to primary schools, while there is capacity in school planning areas, it does not necessarily align with demand. Parental choice is a big driver, with popular schools showing few vacancies across all year groups
- West Planning Area: Harris Academy Riverside and Harris Academy Ockenden oversubscribed

Page 17 Central Planning Area: Grays Convent High School, Harris Academy Chafford Hundred, The Gateway Academy, William Edwards School and Thames Park School are oversubscribed. Orsett Heath Academy, opening in 2024, and may relieve some of this pressure

- East Planning Area: St Clere's School oversubscribed

SEND

- Significant increase in demand for SEND places
- Potential opportunity for additional places to be commissioned as required and where possible during the academic year
- New SEND resource bases have recently been set up, with further bases to come. New bases include Aveley Primary and Stifford Clays Primary



Health

Primary care – GPs and healthcare hubs

- Shift towards integrated health and care model, based on Primary Care Network (PCN) areas and Integrated Medical & Wellbeing Centres (IMWC)
 - The Corringham IMWC is now open with further centres under development or construction in Tilbury, Purfleet and Grays
 - GPs in Thurrock currently have a higher number of registered patients compared with the national average

Page 18

This shortfall will need to be addressed in the immediate future and significant growth within the borough are likely to need to provide additional primary healthcare infrastructure

- Model for residential social care is changing – with greater at care home, this will have implications for growth

Secondary care – Hospitals and acute health services

- Orsett Hospital to close and facilities to be absorbed by IMWC's
- Rising demand for A&E and ambulance services in recent years has placed more strain on secondary healthcare



Open Space and Green and Blue Infrastructure

Open space

- Growth in Thurrock's population will require an increase in the quantity and quality of open space of all typologies to meet the current standards. Provision of new open space will be particularly important where proposed growth areas are in areas with poor access to open space

Green and blue infrastructure

- Multiple SSI's in poor condition which could worsen with growth
- Public Rights of Way are not one cohesive network and LTC will worsen
- Significant barriers to water-based recreation due to inter-tidal mudflats, proximity of commercial ports and ship-wash by passing vessels
- Ambitious policy recommendations in SE Strategic GBI Study to improve landscape by establishing a regional parkland – incorporating marshlands and Mardyke Valley
- Thurrock GBI Strategy identifies projects at the sub-regional and borough level, as well as 'green links', to improve the borough's natural assets



Community

- Provision is not well spread across the borough (four out of six youth clubs are in two towns, being South Ockendon and Purfleet)
- No youth clubs east of Tilbury, an area which covers the towns of East Tilbury, Stanford-le-Hope, Corringham and Fobbing

Page 20

The already high demand for youth clubs is likely to increase with population growth

There is a need for more flexible spaces to accommodate ad-hoc uses

- Many existing sites are in need of modernisation to respond to community need
- The operation of, and services available, at existing provision may need to adapt to accommodate more and varying demand with population growth
- New facilities may need to be provided to meet future demand. Thurrock Museum in need of more storage space, as well as a refurbished gallery



Sports and Leisure

- Only 51.5% of Thurrock's population live within one mile (approximately a 20-minute walk) of a swimming pool – however, 100% of the population live within a 20-minute drive
- Seven of the council-owned pools across three different facilities, are beyond their anticipated life expectancy, of poor quality and at capacity during peak times

Page 21.

Capacity issues for gymnastics

Pitch clubs reported latent demand – driven by a lack of playing pitches to field additional teams

- All 3G pitches are currently at or close to capacity, reporting a need for further provision to meet future demand
- Consultation highlighted an increasing demand for cricket squares (however Council has limited control over how private clubs manage demand or refurbish)
- Reported shortfall of rugby pitches in Central Thurrock



Member's Briefing – Local Plan and IDP

Feedback and next steps

Next Steps

What we will deliver

- Update Infrastructure Baseline Assessment in accordance with new evidence base – including new strategies and consultation with Thurrock Council / external stakeholders
- We are preparing the IBA which will be published for consultation at the **end of February 2023**.
 - We will gather feedback from the community on different infrastructure types, including local insights on constraints and concerns.
- Input to the development of the spatial strategy and the site selection process
- Identify opportunities for delivery of infrastructure
- Once spatial distribution of growth and sites for allocation confirmed – assess infrastructure needs, undertake/feed into modelling of infrastructure requirements
- Cost, phasing and delivery – identify sites/locations where appropriate
- Input to viability assessment
- Develop a draft Infrastructure Delivery Plan, which will be published alongside the Regulation 18 Local Plan, for public consultation

ARUP

LURB NPPF Proposed Amendments

- ❑ Minor modification to the presumption in favour
- ❑ Removal of the justified test of soundness
- ❑ Additional text relating to Green Belt
- ❑ Emphasis on design has been strengthened further, with a focus on 'beautiful design' throughout and the requirement for LPAs to bring forward design codes for their area
- ❑ Greater weight to energy efficiency improvements in existing buildings and there is also increased support for applications for the repowering and life-extension of existing renewable sites.

'Green Belt boundaries are not required to be reviewed and altered if this would be the only means of meeting the objectively assessed need for housing over the plan period.'

This page is intentionally left blank